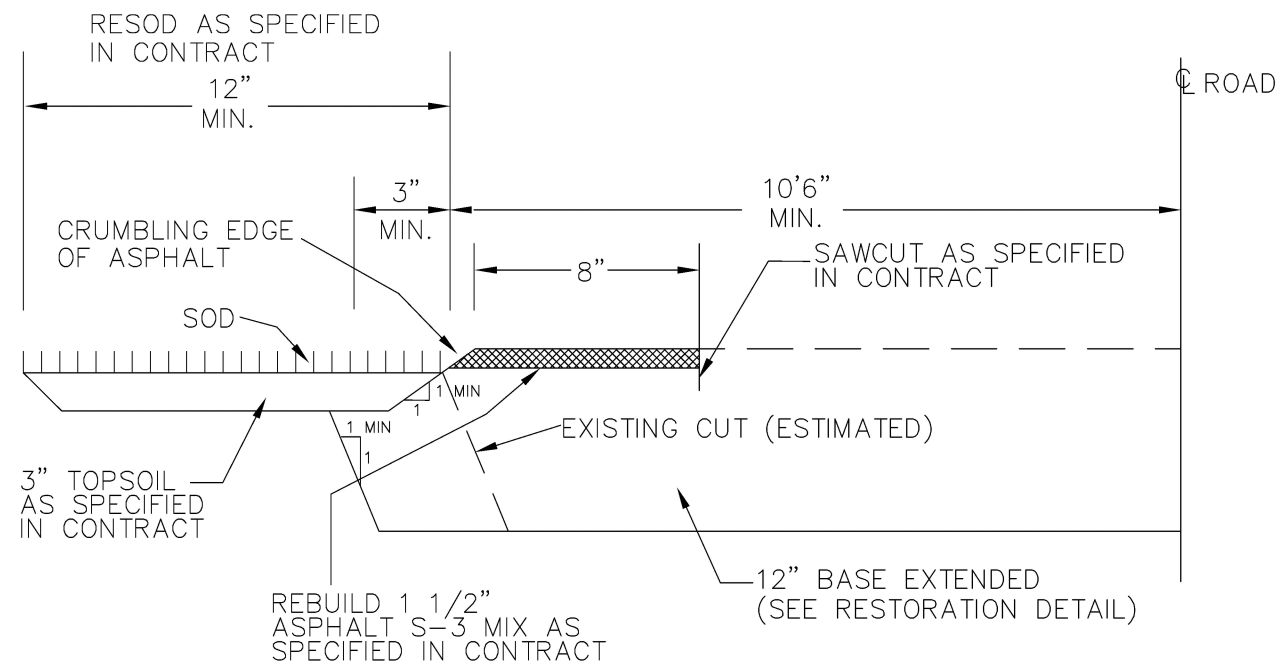


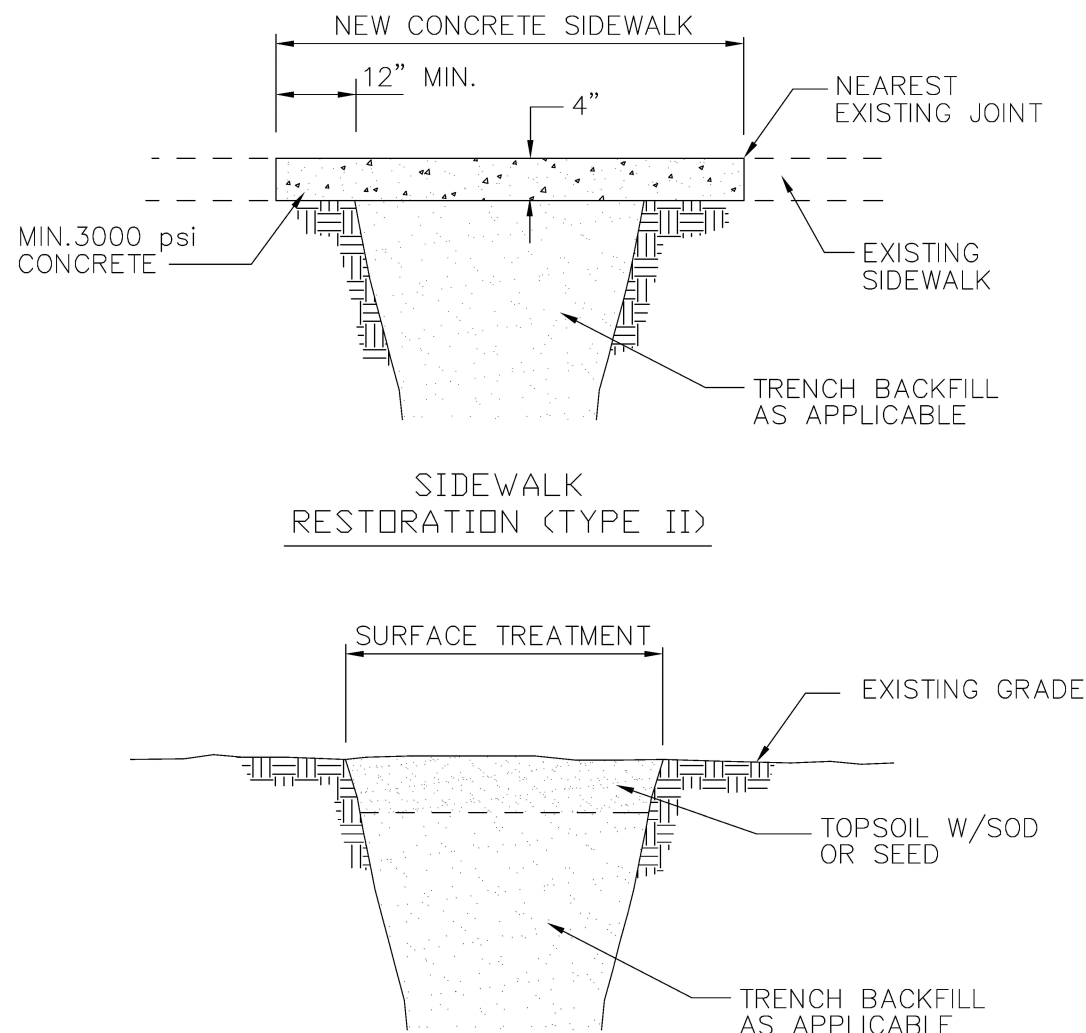
TYP. DRIVEWAY SWALE SECTION

ENGINEERING STANDARDS 2022			
REVISIONS		ENGINEERING DIVISION	TYPICAL DRIVEWAY SWALE
BY	DATE		
S.S.	6/21/07	CITY OF POMPAÑO BEACH	
		SCALE: N.T.S.	DATE: MAY 2022 DWG. NO. 305-2



EDGE OF PAVEMENT RESTORATION

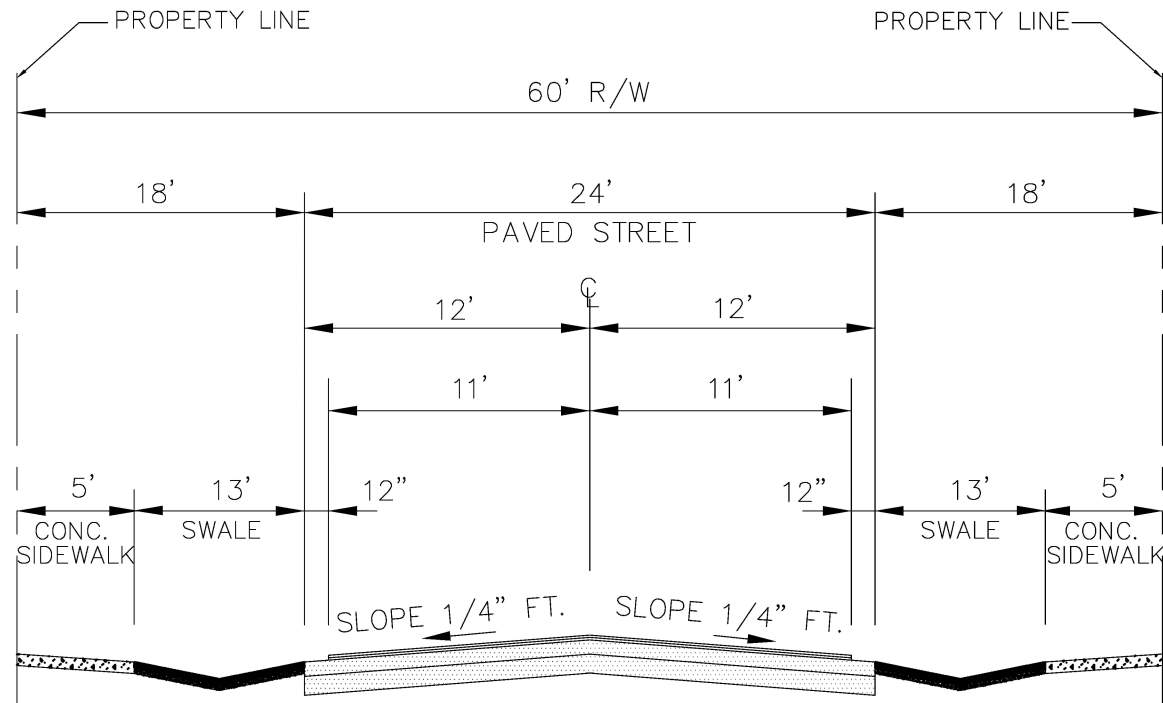
ENGINEERING STANDARDS 2022			
REVISIONS		ENGINEERING DIVISION	EDGE OF PAVEMENT RESTORATION
BY	DATE		
		CITY OF POMPAÑO BEACH	
		SCALE: N.T.S.	DATE: MAY 2022 DWG. NO. 306-4



SWALE RESTORATION (TYPE I)

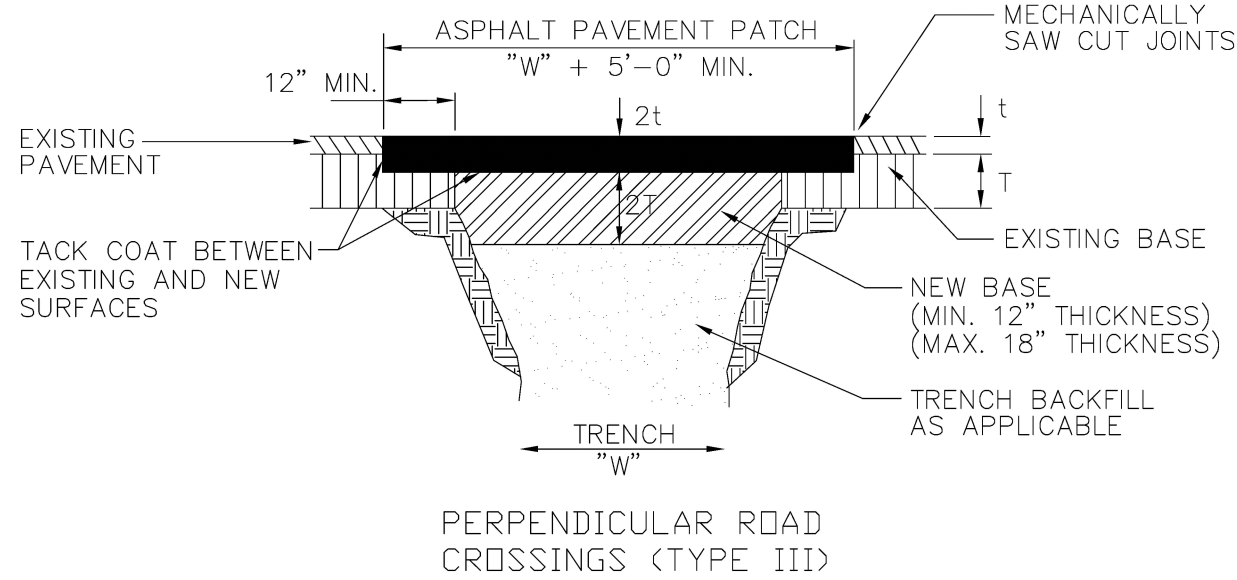
SURFACE RESTORATION

ENGINEERING STANDARDS 2022			
REVISIONS		ENGINEERING DIVISION	SURFACE RESTORATION
BY	DATE		
S.S.	5/05/10	CITY OF POMPAÑO BEACH	
		SCALE: N.T.S.	DATE: MAY 2022 DWG. NO. 306-1



TYP. ROADWAY SECTION

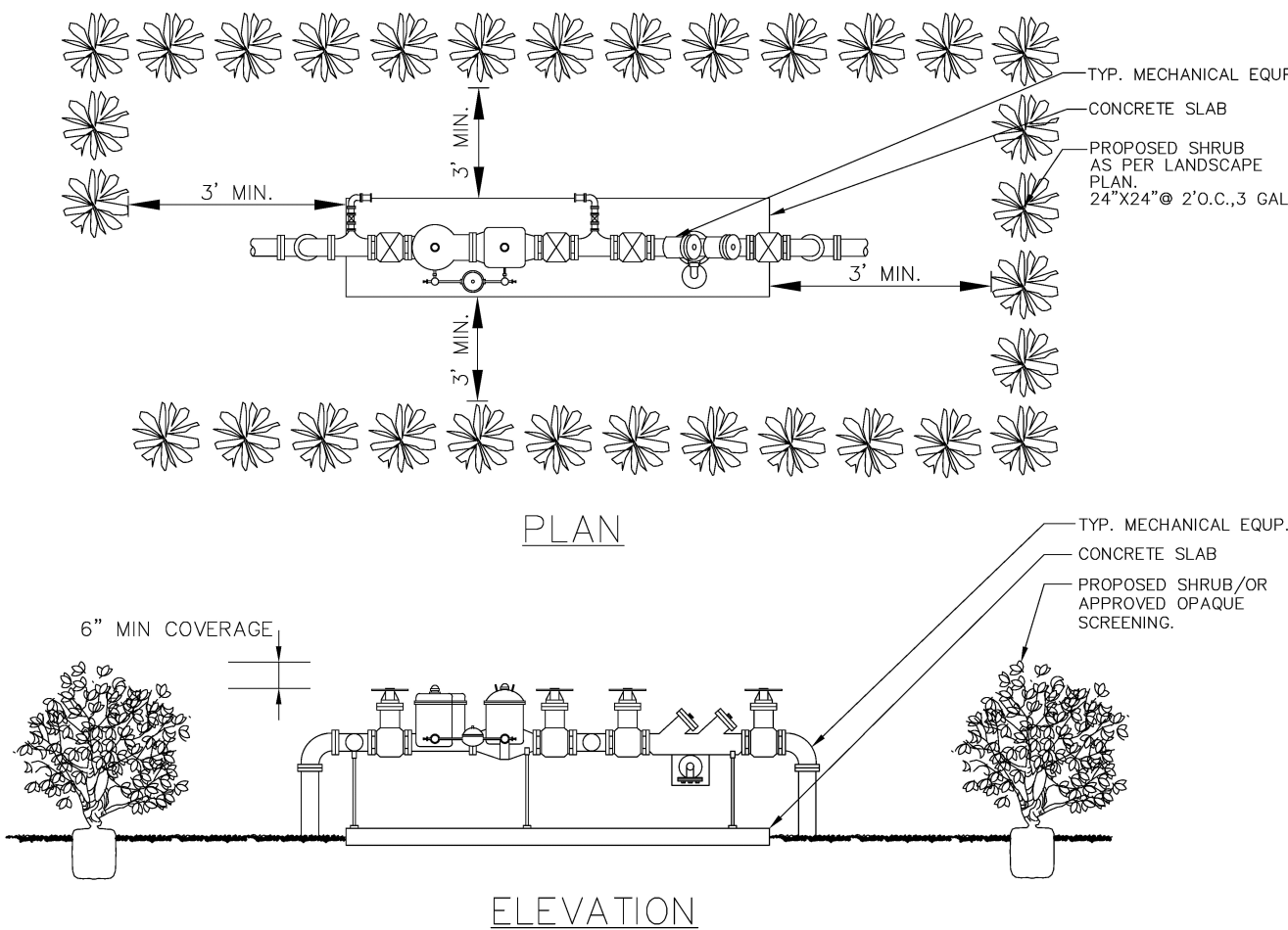
ENGINEERING STANDARDS 2022			
REVISIONS		ENGINEERING DIVISION	TYP. ROADWAY SECTION
BY	DATE		
		CITY OF POMPAÑO BEACH	
		SCALE: N.T.S.	DATE: MAY 2022 DWG. NO. 314-1



STANDARD PARALLEL ROAD RESTORATION (TYPE IV)

SURFACE RESTORATION

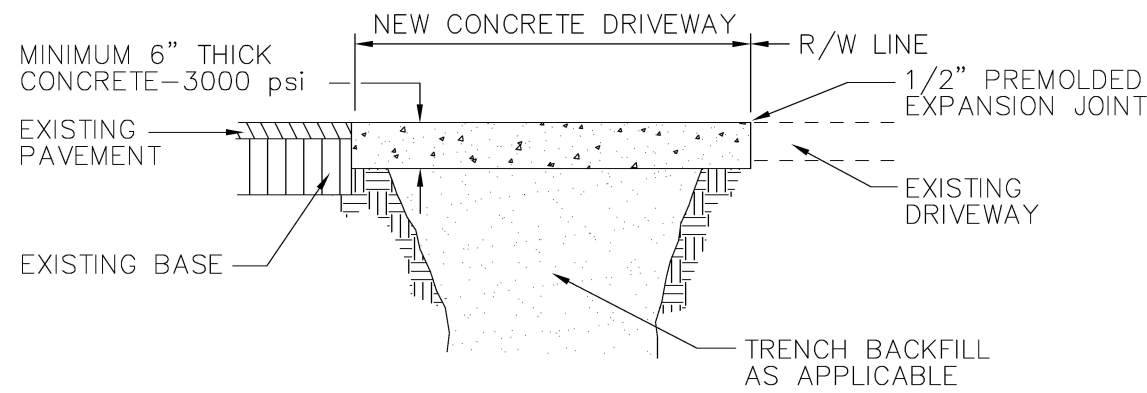
ENGINEERING STANDARDS 2022			
REVISIONS		ENGINEERING DIVISION	SURFACE RESTORATION
BY	DATE		
		CITY OF POMPAÑO BEACH	
		SCALE: N.T.S.	DATE: MAY 2022 DWG. NO. 306-2



TYPICAL SCREEN FOR UTILITIES

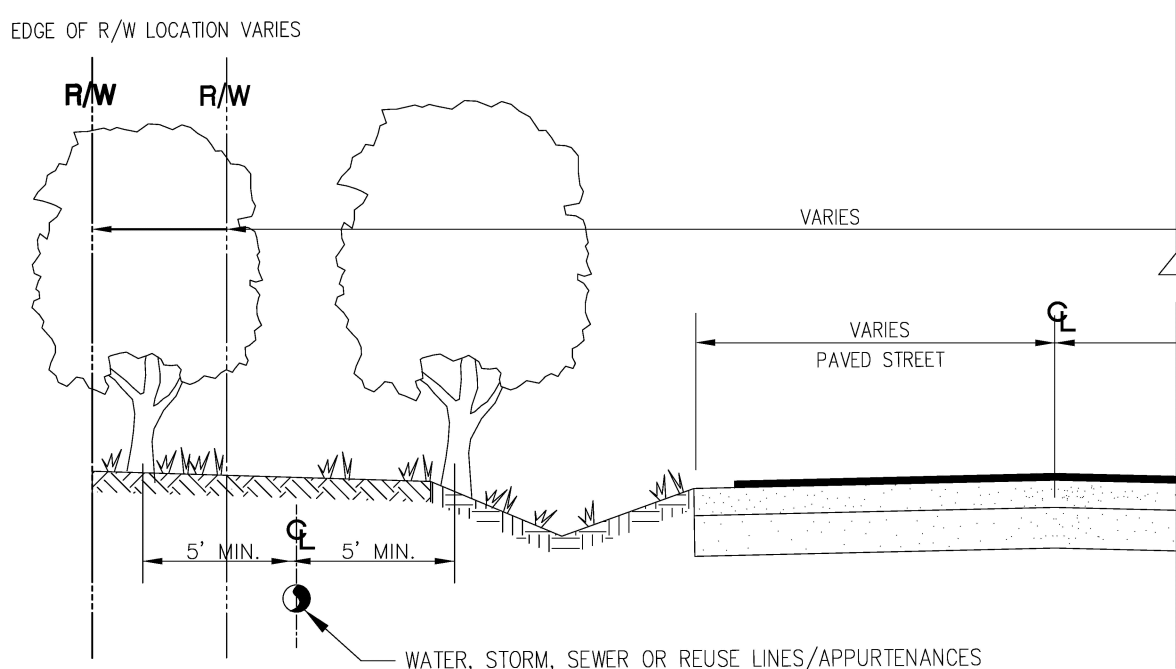
NOTES
PLEASE NOTE THAT AS PER CITY ORDINANCE(S) 50.02(A) (4) AND 100.35(E), STREET TREES SHALL NOT BE PLACED ON TOP OF OR 5' OF EITHER SIDE OF ANY CITY OWNED UTILITY INFRASTRUCTURE. ALSO, PLEASE NOTE THAT NO TREES SHRUBBERY OR OBSTRUCTION SHALL BE PLACED WITHIN A 3' RADIUS OF A CITY OWNED LATERAL CLEANOUT OR WATER & OR REUSE METER.

ENGINEERING STANDARDS 2022			
REVISIONS		ENGINEERING DIVISION	TYPICAL SCREEN FOR UTILITIES
BY	DATE		
TCW	APRIL 2010	CITY OF POMPAÑO BEACH	
		SCALE: N.T.S.	APPROVED BY: DATE: MAY 2022 DWG. NO. 315-1



SURFACE RESTORATION

ENGINEERING STANDARDS 2022			
REVISIONS		ENGINEERING DIVISION	SURFACE RESTORATION
BY	DATE		
		CITY OF POMPAÑO BEACH	
		SCALE: N.T.S.	DATE: MAY 2022 DWG. NO. 306-3



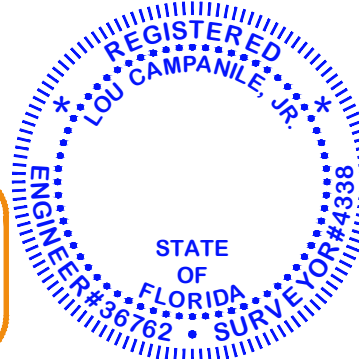
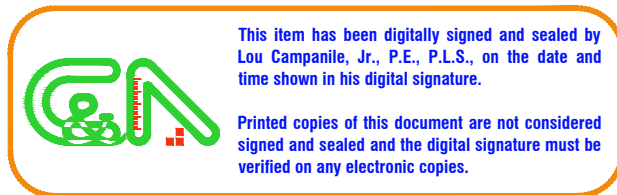
TREE LOCATIONS REQUIRED IN PUBLIC R/W ON UTILITY EASEMENTS

NOTES
PLEASE NOTE THAT AS PER CITY ORDINANCE(S) 50.02(A) (4) AND 100.35(E), STREET TREES SHALL NOT BE PLACED ON TOP OF OR 5' OF EITHER SIDE OF ANY CITY OWNED UTILITY INFRASTRUCTURE. ALSO, PLEASE NOTE THAT NO TREES SHRUBBERY OR OBSTRUCTION SHALL BE PLACED WITHIN A 3' RADIUS OF A CITY OWNED LATERAL CLEANOUT OR WATER & OR REUSE METER.

ENGINEERING STANDARDS 2022			
REVISIONS		ENGINEERING DIVISION	REQUIRED TREE LOCATIONS
BY	DATE		
		CITY OF POMPAÑO BEACH	
		SCALE: N.T.S.	APPROVED BY: DATE: MAY 2022 DWG. NO. 316-1

DRC

PZ24-12000023
07/16/2025



CAMPANILE & ASSOCIATES, INC.
ENGINEERS PLANNERS SURVEYORS
6420 MAHI DRIVE
CORAL GABLES, FLORIDA 33158-1841
TEL: (305) 971-1988
LB 1678

5/14/25
Lou Campanile, Jr.
Professional Engineer No. 38792
Professional Surveyor No. 4338
State of Florida

for
RJS ARCHITECTS, INC.

ELIAS APARTMENT BUILDING
216 SE 23 AVENUE
POMPAÑO BEACH, FLORIDA 33062-5304
CITY OF POMPAÑO BEACH DETAILS

PROJECT NO. 5391
DATE 10/9/24
REVISIONS

DRAWING
PGD-10
SHEET